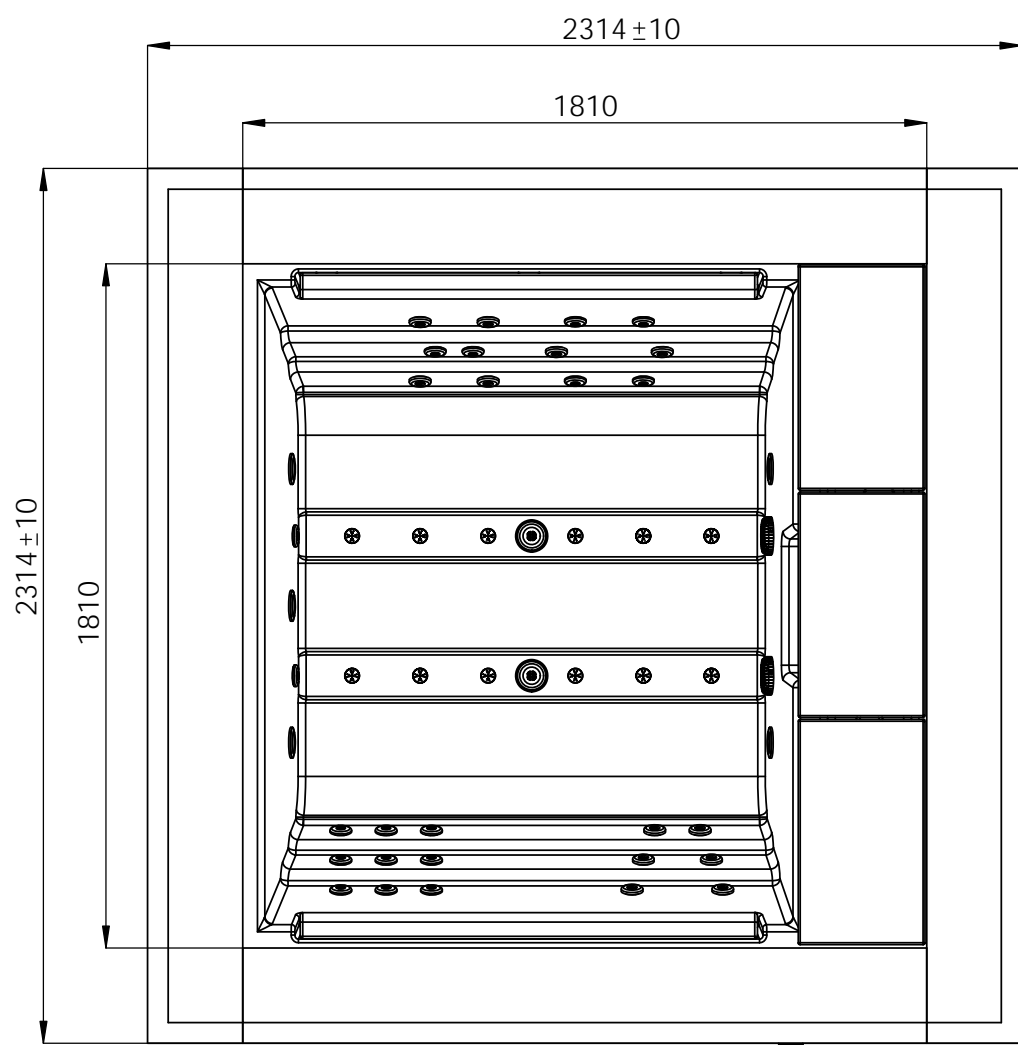
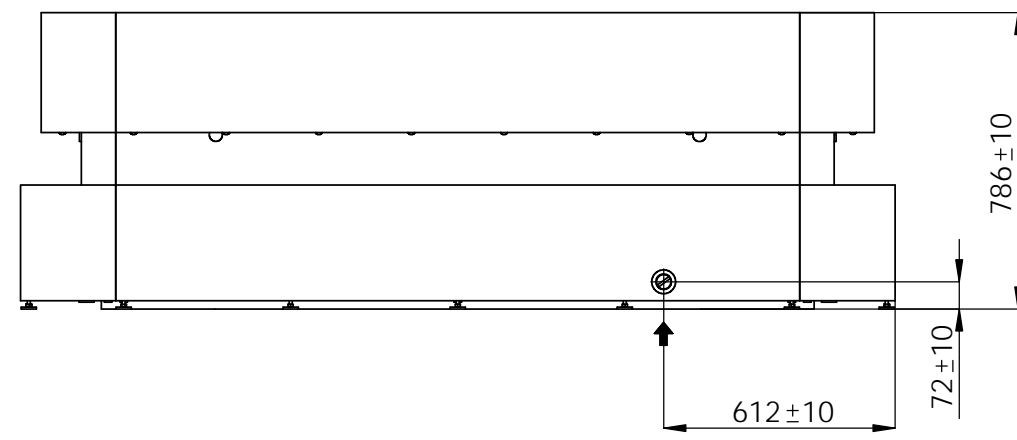
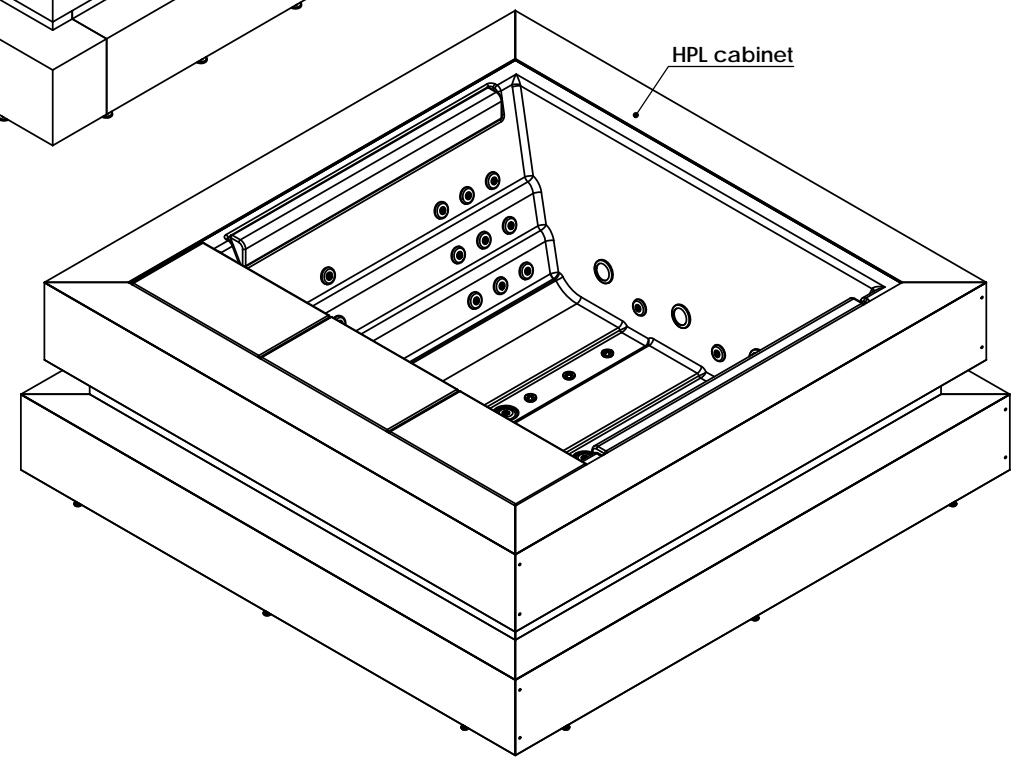
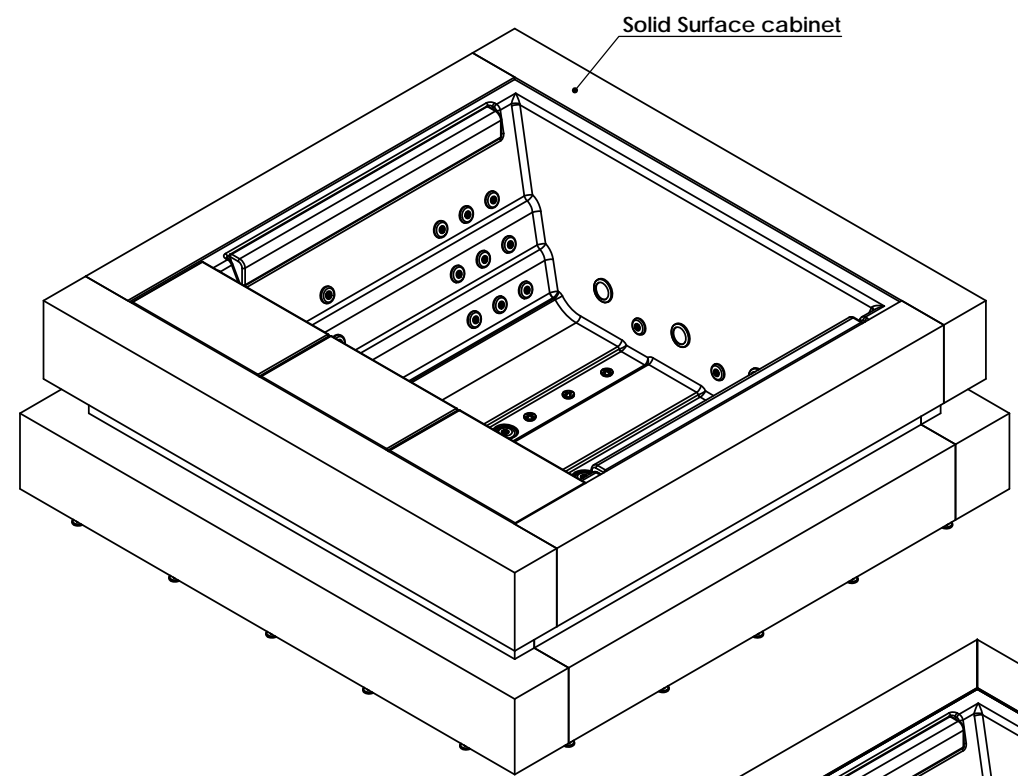


General specifications	
Spa Package dimension	2420x1200x2200mm
Cabinet Package dimension	2400x900x1470mm
Spa Package weight	333 Kg
Cabinet Package Weight	400 Kg



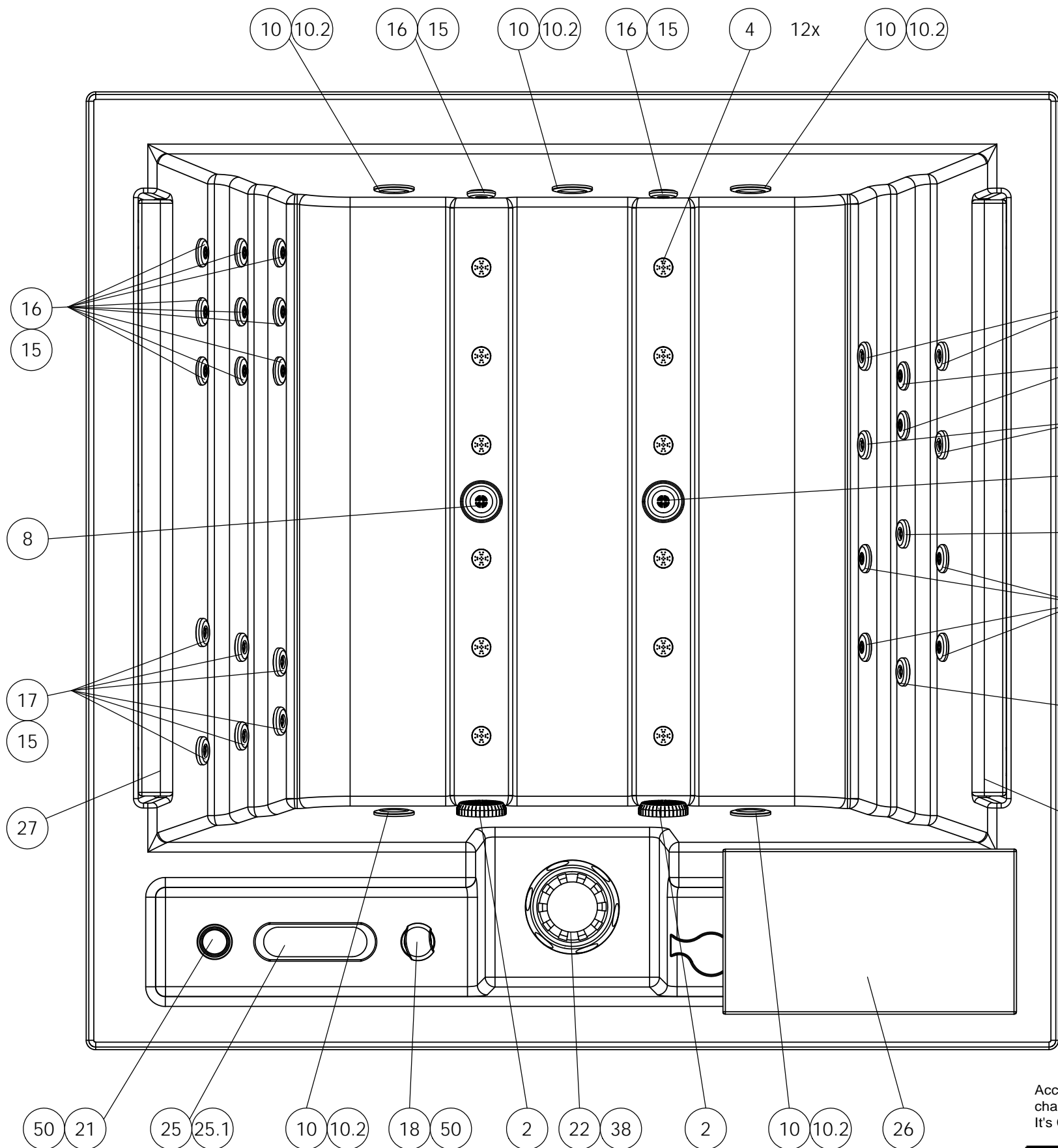
↑  
↑  
ELECTRICAL BOARD CONNECTIONS ACCESS



According to our policy of continuous improvement, dimensions, features or components of this product can be partially or completely changed without prior notice. It's Customer responsibility to verify that this is the last version of the drawing

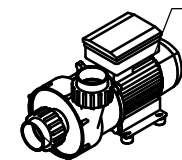
Change No.	Date	Name	Modification
05	07/10/2014	I.Pozo	Change Blower 700W and add transformer/controler
04	15/04/2014	I.Pozo	Change filter
03	27/09/2013	X.Codina	New Templates
02	29/07/2013	X.Codina	Distribució dels jets
01	09/04/2013	X.Codina	Modificacions cubitera i moble

Remarks			COMMERCIAL			
Dimensions in mm. General Tolerances +/- 10mm						
Drawn	09/04/2013	X.Codina		Part Number <b>56541</b>	Rev. <b>05</b>	First Angle Projection 
Checked		I.Nicolas				
Scale 1:20	General Tolerance DIN 7168 ISO 2768g					
Sheet 1/2						



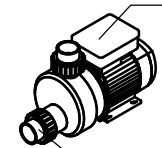
**PUMPS SPARE CODES**

RPOR0245  
MASSAGE PUMP  
LP250 CV



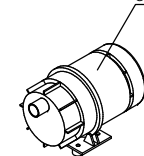
RPOR0256  
UNION NUT+TAILPIECE  
PUMP LP / WP

RPOR0244  
FILTRATION PUMP JA35  
0,35CV



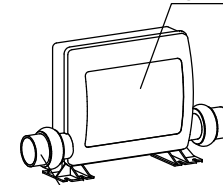
RPOR0257  
UNION NUT+TAILPIECE  
PUMP JA

RPOR0274  
SPA BLOWER 700 W



**HEATER AND DESINFECTION SPARE CODES**

RPOR0191  
BOX GS501SZ 1  
PUMP + BLOWER



07816R1013  
HEATER RACORDS (2 UNITS)

RPOR0101 - TEMPERATURE PROBES GS I GL (x 2)  
RPOR0105 - HEATER 3 KW GS I GL  
RPOR0197 - DIGITAL PANEL GS501SZ

RPOR0266  
UV DESINFECTION  
SYSTEM



ACCESSORIES			
Position Num.	Part Nº SPARE	Description SPARE	Quant.
2	RPOR0225	GREY SPA DRAIN 2" ADAPTOR SOCKET D.50	2
4	REMP0046	WHITE-STAINLESS STEEL AIR NOZZLE	12
8	RPOR0003	GREY DRAIN SET - BODY+COVER+ASSEMBLY	2
10	RPOR0239	SPOTLIGHT LED SET RD	5
10.2	RPOR0252	LED SLAVE LIGHT	5
15	RPOR0235	JET BODY SET RD 2"	29
16	RPOR0230	FRONTAL JET 2" STAINLESS STEEL DIRECTIONAL	17
17	RPOR0260	JET TWIN ROTO 2" INOX	12
18	RPOR0261	VENTURY CONTROLLER SS	1
21	RPOR0264	AROMA DISPENSER ASM LIT	1
22	RPOR0238	SKIMERFILTER RD LOW PROFILE	1
25	RPOR0195	DIGITAL PANEL VL700+COVER 1 PUMP + BLOWER	1
25.1	RPOR0201	COVER DIGITAL PANEL VL700 1 PUMP + BLOWER	1
26	RPOR0269	TOP COVER CUBE SPA	3
27	RPOR0270	HEADREST CUBE SPA	2
38	RPOR0247	FILTER CARTRIDGE SKIMFILTER RD	1
50	RPOR0267	4 LEDS LIGHTS POINTS	2
70	RPOR0280	LEDS TRANSFORMER 5V DC	1
71	RPOR0281	LEDS CONTROLER	1
72	RPOR0253	CLIP LED SLAVE	7

According to our policy of continuous improvement, dimensions, features or components of this product can be partially or completely changed without prior notice. It's Customer responsibility to verify that this is the last version of the drawing

Change No.	Date	Name	Modification
05	07/10/2014	I.Pozo	Change Blower 700W and add transformer/controler
04	15/04/2014	I.Pozo	Change filter
03	27/09/2013	X.Codina	New Templates
02	29/07/2013	X.Codina	Distribució dels jets
01	09/04/2013	X.Codina	Modificacions cubitera i moble

Remarks		
Dimensions in mm. General Tolerances +/- 10mm		
Drawn	09/04/2013	X.Codina
Checked		I.Nicolas
Scale 1:20	General Tolerance DIN 7168 ISO 2768g	
Sheet 2/2		



**SPARE PARTS DRAWING**

Part Number	Rev.	First Angle Projection
56541	05	

RPOR0136  
DRAIN FILL VALVE (BLACK)

